

Connecting the Sony Camera via the USB SDK 1.04



Enable Sony Camera Searching

The Sony plugin is disabled by default and has to be activated. Click the Settings button in ShutterStream software, then About, Enable/Disable plugins, enable Sony.

Based on the Sony PDF Document "Sample Application for Camera Remote SDK Instruction Manual version 1.04.00"

This KB article is for ShutterStream version 12.1. and install libusbK 3.0.7.0 version.

If your Sony camera supports the Sony USB SDK, then here are the steps for connecting the Sony camera to your computer.

- 1 [Preparation \(OS common\)](#)
- 2 [Preparation \(Mac\)](#)
- 3 [Preparation \(Windows\)](#)
- 4 [Preparation \(Linux\)](#)

Preparation (OS common)

- Camera settings and connect to PC/(SBC). Please set "On" for "PC Remote" and "USB" for "PC Remote Cnct Method" in "PC Remote Function" Menu.
- Please connect the Camera to your PC/(SBC)
- Set your camera to capture JPG. RAW capture is not yet supported (ShutterStream 11.0), but will be in future versions.

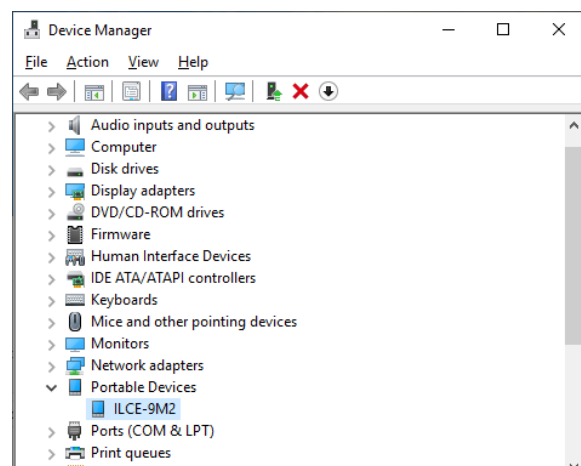


Preparation (Mac)

- Version 12.0 and higher do not require any additional Mac configurations.
- Version 11.0 only:
 - In order to make the Sony camera successfully connect to ShutterStream, users will need to manually rename the 'libNkPTPDriver2.dylib' to '_libNkPTPDriver2.dylib' (path: /Applications/ShutterStream.app/Contents/Frameworks) and
 - Have the Sony camera searching option enabled from ShutterStream About.

Preparation (Windows)

- Please check "Device Manager" if your camera "ILCExxx" is under "Portable Devices".



Installation of libusbK

- Please download [libusbK 3.0.7.0 setup.exe](#) and install like below. "libusbK 3.0.7.0" is the version verified for SDK.

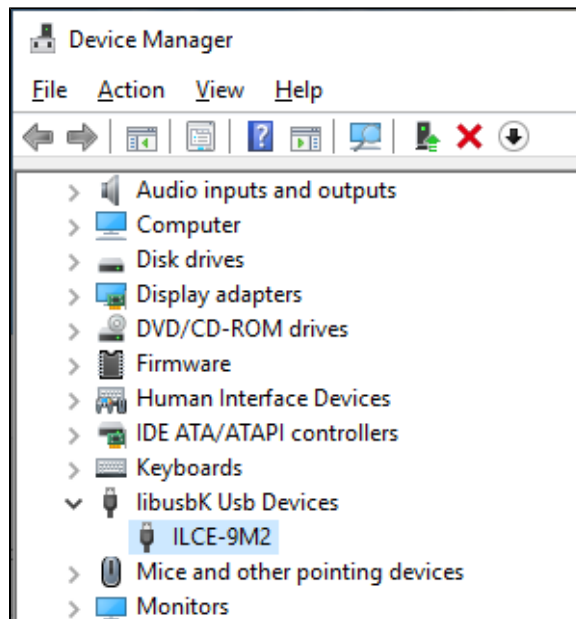
Check if you got the camera selected, we got this one selected, ILCE-9M2 in this case.



Click Finish & Install Driver Now. Then click the Finish button.



Please check “Device Manager” if your camera “ILCExxx” is under “ libusbK Usb Devices”. If you come to this step, you are ready to develop your application by using Camera Remote SDK.



Preparation (Linux)

Installation of some necessary packages:

- Install some necessary packages below.

USB setting

- Change USB bulk setting [Raspberry Pi OS]
Add the command below at the end of the file “/etc/rc.local” before “exit 0” to modify Bulk Transfer Rate configuration file

```
$ sudo apt install autoconf libtool libudev dev
gcc g++ make cmake unzip
libxml2 dev
```

```
$ sudo sh -c 'echo 150 > /sys/module/usbcore /
usbfs_memory_mb
exit 0'
```

[Ubuntu (forChange “APPEND \${ cbootargs } quiet”

to the command below in the file “/boot/ extlinux extlinux.conf

```
before:
APPEND ${ cbootargs } quiet
after:
APPEND ${ cbootargs } usbcore.usbfs_memory_mb =150
usbcore.autosuspend 1
```

Reboot and check the configuration

Save & Close the file and reboot. Make sure that “150” is written in the configuration file.

“/sys/module/usbcore / usbfs_memory_mb

```
$ cat /sys/module/usbcore/usbfs_memory_mb
150
```

Related articles

- [USB Extension](#)
- [Update Sony Camera and Connect it to ShutterStream](#)
- [Troubleshooting Nikon Camera](#)
- [Sony Camera Wireless Connection Issues Fixed](#)
- [Sony Camera Support](#)
- [Sierra and Nikon Cameras](#)
- [Sierra and Canon Cameras](#)
- [Shutter Stream Basic Troubleshooting Guide](#)
- [Setting Up the Platinum XL Turntable](#)
- [Problems Recognizing Or Connecting Camera To Shutter Stream Software](#)
- [Nikon Error Codes](#)
- [Multiple Cameras and Powered USB hub](#)
- [Long Connection Times and Disabling Other Camera Search](#)
- [Installing the Arduino Turntable Driver](#)
- [Install Mac Catalina Beta](#)